



Upper Calf Creek Falls - Escalante



RATING: Easy Hiking
LENGTH: 1-3+ hours
MAPS: Calf Creek, UT
SEASON: Any, no snow

Hype:

Although Lower Calf Creek falls gets most of the press, Upper Calf Creek falls is my favorite. Less crowded, with plenty of beauty, this is a great place to spend a hot day lounging.

Trailhead:

The trailhead is right off of highway 12. The easiest way to find it is to start from the Calf Creek Campground turnoff, and travel north on highway 12 for 5.6 miles to a short side road on the right (west) side of the road. There are a few side roads here. If you are at the correct one, you will find a few parking spots, and a trailhead sign in register on the west side of the parking area.

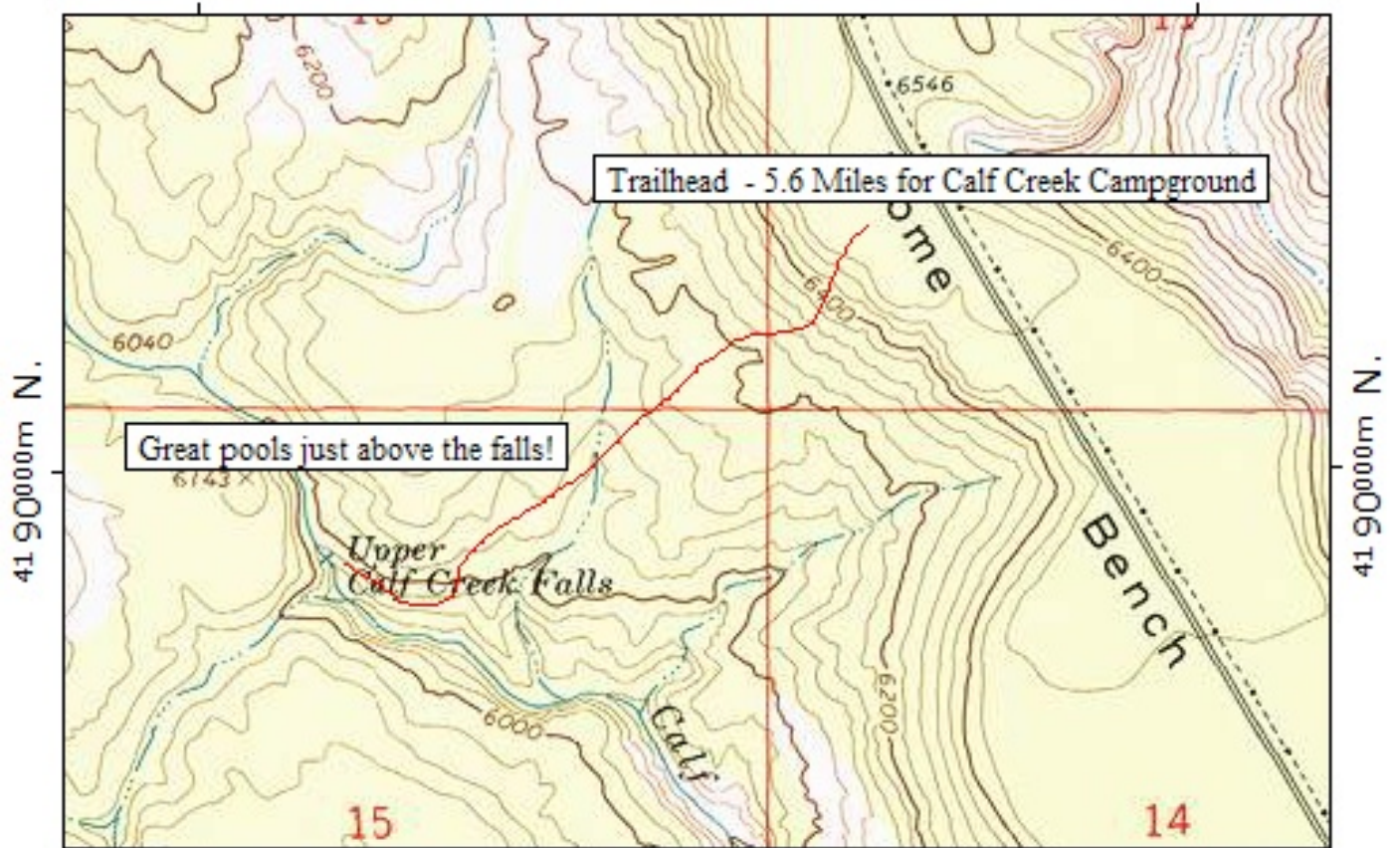
Route:

From the parking area, go past the trailhead register, and head down the well caired trail. It begins on relatively steep slickrock as it quickly descends and becomes more gradual. About 30 minutes from the car, near the bottom of the canyon, the trail splits. Left goes to the bottom of the falls. Right goes above the falls to some other small falls and pools. Both are worth a visit.

Return the way you came. Hiking time is about 30 minutes down, and 30-60 minutes back up depending on energy level.

460000m E.

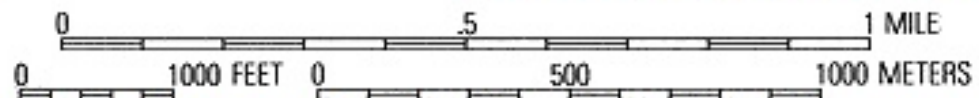
WGS84 Zone 12S 462000m E.



460000m E.

WGS84 Zone 12S 462000m E.

TN
MN
12½°



Map created with TOPO!® ©2003 National Geographic (www.nationalgeographic.com/topo)